



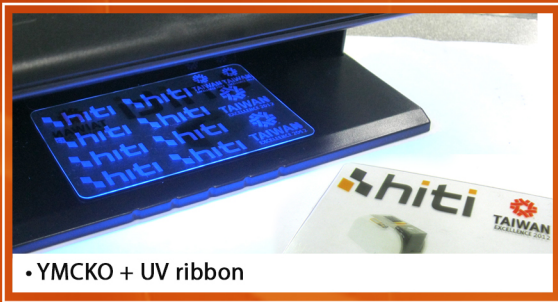
ADMIRAL

Productivity and Versatility

Ideal Solution for Instant Issuance of ATM, School ID's and Loyalty Card



• Can print on Transparent Cards



• YMCKO + UV ribbon

Outstanding Design

- High speed printing engine
- Uptime increasing with less staff interruption
- Wide-range of optional encoding modules
- Intuitive user interface
- Compact and lightweight body
- Low noise in service

Wide-range & Field Upgradable Encoding Options

- Contact smart IC chip encoding module
- Contactless (RFID) encoding module
- Magnetic stripe card encoding module

Other Flexibilities

- Flipper module
- Ethernet connection module
- High capacity input hopper (400 cards loader)

CP-1000

Card Printer

Admiral CP-1000 features compact design, photo realistic quality and versatile modules. The Admiral CP 1000 series blends Hiti high definition dye sublimation thermal transfer and world-leading color technologies, resulting in up to 16.7 million colors in continuous tone and sophisticated photo quality on every print.



This printer is powered by **HiTi Color**



SOLID BUSINESS MACHINES CENTER, INC.

SUITE 303, SINGSON BUILDING, PLAZA MORAGA, BINONDO, MANILA, PHILIPPINES 1006

Trunkline : (632) 8-242-1111 Connecting all Departments Fax No.: (632) 8-242-1345, 8-242-1348

e-mail: sales@solidmac.com.ph

www.solidmac.com.ph



PRODUCT SPECIFICATION

Model	• Admiral ID card printer CP-1000
Print Technology	• Dye Sublimation (Direct-to-card)
Print Capability	• Edge-to edge printing • One-sided or dual-sided printing ¹ • Full color (YMCKO) and monochrome printing
Print Resolution	• 300dpi
Display	• LCM (Liquid Crystal Monitor)
Memory	• 64MB
Print Speed ²	• Full color printing (YMCKO) up to 180 cards per hour • Monochrome black printing up to 1400 cards per hour
Card Format	• CR-80 ASO7810 (53.98mm x 85.60mm) Thickness from 0.25mm ~ 1.0mm ~ (10mil~40mil)
Input Capacity	• 100 cards (0.76mm / 30mil)
Output Capacity	• 50 cards (0.76mm / 30mil)
Supported OS	• Windows 2000, XP, Vista, Windows 7 (32/64-bit), Mac 10.6, 10.7, 10.8, Windows 8 (32/64-bit), Windows 10 (32/64-bit)
Bundled Software	• CardDésirée CS
Printer Dimension	• 197.8mm(W) x 354mm(L) x 204mm(H)
Printer Net Weight	• 4.9kg / 10.8lbs (print media excluded)
Operating Condition	• 15~32 °c (59~89.6°F), 20~75% RH non-condensing
Print Media	• Full panel YMCKO 400 roll (Ribbon only), 16 rolls in a carton • 1/2 panel YMCKO 560 roll (Ribbon only), 16 rolls in a carton • Monochrome Resin Black 1000 roll (Ribbon only), 16 rolls in a carton
Optional Encoding Modules	• Contact smart IC chip encoding module • Contactless (RFID) encoding module (ISO 14443A & B, ISO 15693) • Magnetic stripe card encoding module (ISO 7811 Hi-co/Low-co)
Other Option & Accessories	• Flipper module • High capacity input hopper (400 cards loader) • Ethernet TCP-IP connection module - Availability to be updated • Cleaning roller (Dust arrester excluded) - Availability to be updated



CardDésirée CS

- Friendly Template Design Interface
- Convenient Database Connection
- Batch Print Management
- Superb Photo ID Editing Functions



OPTIONAL MODULES

